



*Vietnam*

# HALONG BAY AND RED RIVER

HALONG BAY TO HOA BINH - 10 NIGHT  
NOVEMBER TO JUNE

UPSTREAM

On a Pandaw ship travellers are able to explore the key sites of Northern Vietnam by river ship traversing the Red River delta and its main tributaries, connecting the wonders of Halong Bay with the excitements of downtown Hanoi, and then on into the interior, well off the beaten track. This is a combination of scenic beauty, lively and interesting (sometimes industrial) life of the river and exploring rivers where no other tourist craft operate.

Sailing deep into Highland Vietnam we will discover the mountain villages and a number of tribal areas. We will go as far as is navigable up the Song Red River and then down the little known Da or Black River. Note that this is a real river expedition and itineraries and schedules very much subject to change due to uncertain local conditions.



[VIEW ONLINE](#)

# CONTENTS

---



Route Map ..... p.03

Itinerary Upstream ..... p.04

Pandaw Stateroom ..... p.07

Ships - RV Angkor Pandaw ..... p.08

Pre & Post Tours ..... p.09

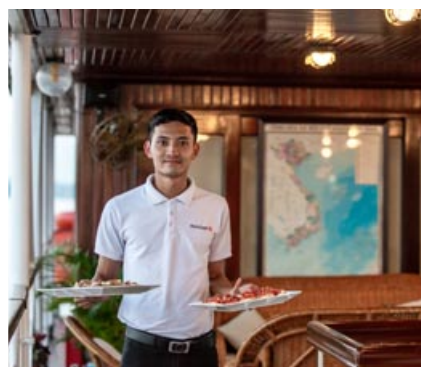
Other information ..... p.17

# ROUTE MAP

---



UPSTREAM





# ITINERARY UPSTREAM

---



## DAY 1 HALONG BAY

Transfer from Hanoi to Halong Bay to embark your Pandaw ship followed by lunch on board. Cast off in the afternoon with a welcome cocktail for an evening sail, dropping anchor in a sheltered bay amidst the beautiful island scenery.

[More about Halong Bay](#)



## DAY 2 HALONG BAY

Morning sail around Halong Bay and beyond with its 1,500 dramatic limestone islands and extraordinary rock formations, dating back 20 million years. We make a stop at Viet Hai Village and continue our journey by mountain bike or electric buggy to visit the village's vegetable farm and typical village houses. It is a breathtaking trip along a small road winding its way through the limestone rocks. In the afternoon we will continue cruising towards Lan Ha Bay for a visit to a floating fishing house. Weather dependent, we will end the day with cocktails at a beautiful beach in Halong Bay.

[More about Lan Ha Bay](#)



## DAY 3 HALONG BAY

Our exploration of Halong Bay continues and we stop at the so called "Dark and Bright Cave". Take a kayak or a local basket boat rowed by fishermen and enter this remarkable cave into an enclosed area similar to a crater. Bats can be heard in the cave and massive stalagmites hang from the ceiling. In the afternoon, we leave Halong Bay and enter the river where we drop anchor near Hai Phong.



## DAY 4 THE KINH THAY RIVER

Observe the lively and interesting life of the Kinh Thay river, a key commercial waterway. Afternoon excursion to Thanh Ha Commune with village walk and a private water puppet show set under shade by a beautiful pond of lotus and lilies. We continue cruising until late evening and drop anchor midstream.

[More about Thanh Ha and Water Puppets](#)



## DAY 5 DAY RIVER

This morning we will sail on the Lower Red River and Day River. Afternoon visit the Dien Xa Bonsai Village where we will walk to the bonsai village and meet with local artists and share their bonsai experience. Cruise on Day River towards Ninh Binh City.

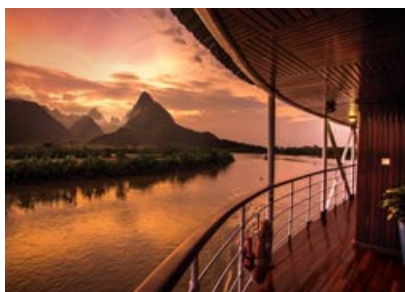
## DAY 6 NINH BINH

In the morning we will visit Tam Coc, taking a rowing boat ride to visit the so call "Halong on land" in Ninh Binh. In the afternoon we visit the quaint

CONT'D ➡

# ITINERARY UPSTREAM

---



village of Pham Phao where guests can walk around the village visiting a host family where musician instruments have been made and repaired for generations. Listen to the owner who plays every instrument within his family run business. We visit local Woodworking Artisans who produce items for local and international markets.

## DAY 7 THE LOWER RED RIVER

In the morning we sail upstream on the Red River to Phat Diem Cathedral visit the famous stone cathedral of Pat Diem. We then continue on the Red River to Hanoi.

## DAY 8 HANOI

Dropped anchor in the bustling city of Hanoi, passengers will visit some highlights of this Asian metropolis, must see's like the notorious Vietnam war prison known as the Hanoi Hilton, temple of literature where Confucius did his thinking and the Ho Chi Minh Mausoleum. Afternoon walking tour of Hanoi including a visit to a coffee shop where we learn about Vietnam's famous coffee making industry. Before returning to your ship you will enjoy a traditional unicorn and lion dance at the jetty.

[More about Hanoi](#)

## DAY 9 HANOI

Morning going off shore to visit Bat Trang ceramic village then sail through day from Hanoi up the Red River to Viet Tri, not the most picturesque of towns but an excellent base for going deeper into Highland Vietnam. Going a shore we visit a timeless Arcadian Vietnam with emerald green rice paddies punctuated by lime stone rock formations. Of particular interest is the Thay and Tay Phuong Pagodas, hardly known, yet with exquisite temples dating from the 8th and 11th century and home to some fine Buddhist statuary carved from jackfruit trees. We will arrive in Vinh Phuc in the evening.

## DAY 10 THE UPPER RED RIVER

In the morning we go ashore to visit the UNESCO praised village of Duang Lam. In the afternoon, visit the carpenter and smith village of Ly Nhan. We sail upstream on the Upper Red River to Viet Tri. Enjoy traditional dances on board.

## DAY 11 VIET TRI

Disembark after breakfast and visit the conical hat making village of Gia Thanh. By bus we continue to Hung Lo Temple, Lunch will be served at a local restaurant, followed by a transfer to Hanoi airport or drop off point Pan Pacific Hotel Hanoi.

# WHATS INCLUDED, TRANSFERS & VISAS UPSTREAM

---

**Cruise Price Includes:** Entrance fees, guide services (English language), gratuities to crew, main meals, local mineral water, jugged coffee, teas & tisanes. Transfers between ports of embarkation and Hanoi International Airport at the start and end of the voyage.

**Cruise Price Excludes:** International flights, port dues (if levied), laundry, all visa costs, fuel surcharges (see terms and conditions), all beverages except local mineral water, jugged coffee, teas & tisanes and tips to tour guides, local guides, bus drivers, boat operators and cyclo drivers.

## Transfers & Joining

### DAY 1 HALONG BAY

#### TRANSFER FROM HANOI AIRPORT

We pick you up at Hanoi Noi Bai International Airport. Last departure is no later than 10:30 (Unless there are any delays with your flight). A Pandaw representative will be waiting for you with a Pandaw Sign at column No12. On the right hand side of the international arrival exit. Arrival in Halong Bay at 12.00.

If you encounter any difficulties, please contact our emergency number of Vietnam - +84 936 903 168

**Please note:** Guides and drivers are not allowed inside the terminal building. We will be waiting for you outside with a Pandaw sign. Hanoi Airport has two exits; if you don't see us, please try the other exit on the same level (30 meters).

#### TRANSFER FROM HANOI CITY

Meeting point for embarkation in Hanoi will be the Pan Pacific Hotel (1 Thanh Nien Road, Ba Dinh Dist., Hanoi 10000, Vietnam) and registration will be at 09:00am in reception. Please ensure you are checked out and ready in reception on time, departure 09:30am.

For those not staying at the Pan Pacific Hotel, Pandaw will arrange a taxi from your hotel in central Hanoi to the meeting point. We will arrange with your hotel reception and inform of exact time the evening before, typically pick up will be between 08:00 and 08:30am. Surcharges apply for hotels outside of Hoan Kiem District or Hanoi Old Quarter.

#### PRIVATE ARRIVAL AT HALONG BAY

For passengers already in Ha Long Bay on the night before, please come to Tuan Chau International Jetty. Embarkation time will be between 12:00 to 13:00.

### DAY 11 VIET TRI

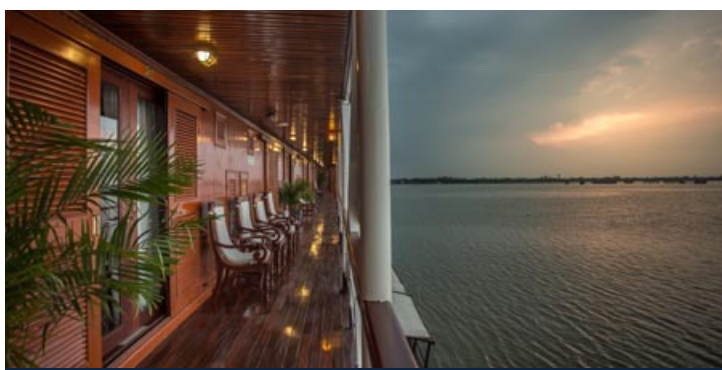
After lunch at local restaurant departure for Hanoi Noi Bai International Airport and Hanoi hotels. Estimated arrival at Hanoi Airport at 14:45, hotels in Hanoi arriving 15:30. Your flight out of Hanoi airport must be after 16.00pm (domestic) or 17.00pm (international).



# PANDAW STATEROOMS

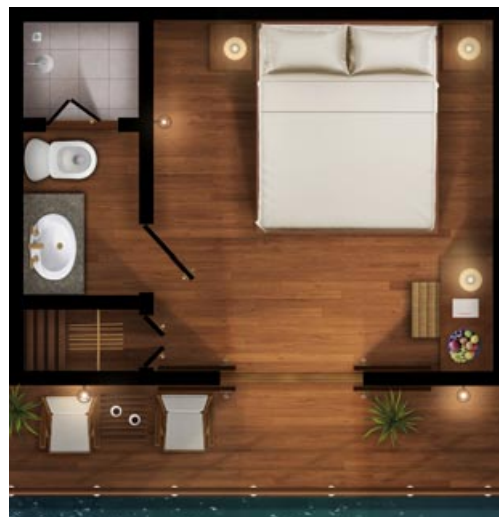
The Pandaw stateroom is the most celebrated feature of our ships, combining splendid colonial-era character with exquisite contemporary comfort.

Finished in brass and teak, the main and upper deck rooms are a spacious 168 square feet (15.6 sqm), with the exception of the Zawgyi Pandaw which is 150 square feet (14 sqm). As the space is much loved by all our passengers, we have ensured that with each ship we build, the stateroom remains essentially the same. Be advised: our cabins do not have mini-bars, satellite TV's, internet access or telephones. Passengers tend to choose Pandaw in order to escape from the tiresome features found in international business hotels.

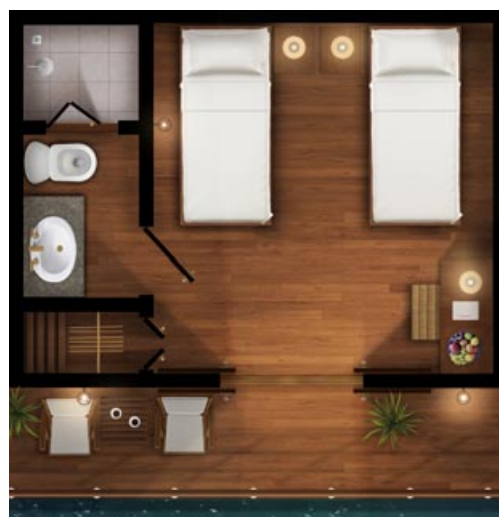


- Fruit and flowers on arrival
- Kimonos and slippers
- Spa-branded amenities
- Unlimited mineral water

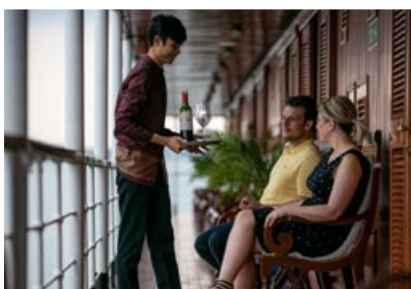
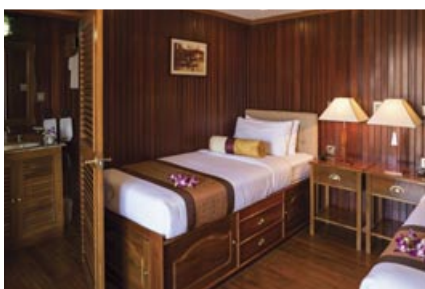
Bedroom	12' x 10'
Bathroom	6' x 4'
Showeroom	2' 8" x 3' 4"
Single Bed	6' 7" x 3' 3"



DOUBLE CONFIGURATION



TWIN CONFIGURATION



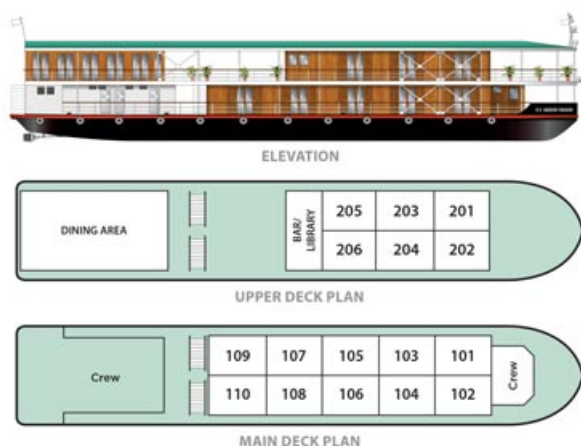
# PANDAW SHIPS

## RV Angkor Pandaw

Sister to the Katha and from the same yard delivered in 2013, the only difference with the Katha is an enclosed air conditioned dining room insisted on by an American charterer. Originally on the Mekong in 2015 we transferred her to the Red River in North Vietnam. In fact the enclosed dining room has proved useful as it can be cold up there in winter.

The ship has quality mountain bikes for your independent exploration.

### Images of RV Angkor Pandaw



- **Build:** 2012 in Saigon
- **Length:** 138.61ft / 42.25m
- **Beam:** 8.50ft / 8.70m
- **Draft:** 3ft / 90cm
- **Berths:** 32 pax

### ACCOMMODATION

- 10 main deck staterooms and 6 upper deck staterooms
- Air-conditioned panorama dining room
- Spacious, open-air lounge
- Observation deck
- Lounge bar
- 24hrs hospitality bar
- Fair-trade Shop
- Guest relation desk
- Library with contemporary and classic literature
- Hair Dryers in all cabins

### WINING & DINING

- Local master chef heading an experienced international culinary team
- Semi-buffet breakfast, Semi-buffet lunch, and seated theme dinners
- Daily lean & light menu options
- Complimentary local mineral water, jugged coffee, teas & tisanes
- Extensive wine list with premium wines
- Series of cultural performances, educational talks, cooking classes, and ship tour
- Welcome drink on arrival
- Welcome cocktail
- Farewell reception
- Theme dinners
- Lounge bar
- 24hrs hospitality bar
- Onboard bakery with daily freshly baked breads and rolls

### ON EXCURSIONS

- Admissions
- Shoe cleaning after excursions
- Bottled drinking water
- We give away aluminium water bottles
- Cold towel service after excursions
- Refreshing drink following excursions
- Full-size motor coach on all excursions
- 1st aid trained assistant guide to follow all tours and excursions

### SAFETY & SECURITY

- All onboard crew is trained and certified as per international marine standards
- Fire alarm system in all cabins, public areas and back areas
- Firefighting system in all ship areas
- Expert marine superintendant
- 24 hrs watch on duty
- Certified hygiene standards for all areas (Johnson & Diversey)

### ONBOARD STAFF

- Captain
- River Pilot
- First Officer
- Chief Engineer
- 1st Engineer
- Electrician
- Bosun & nautical crew
- Ship manager
- Housekeeping
- Dining
- Bar keeper
- Chefs
- Spa therapist
- Local tour guides

### PUBLIC SPACES

- Guest relation desk
- Shop, supporting fair trade
- Library with contemporary and classic literature
- Wireless internet in all public areas



# PRE & POST EXTENSIONS

Pre & Post Bookable via Pandaw.com as add on

---

## Pre Tour

## HANOI

(SOFITEL LEGEND  
METROPOLE)

### UPSTREAM

Hanoi is a magical and charming city. You will find that the character, history and romance of the Sofitel Legend Metropole Hanoi may add a little extra special something to your journey here. Savour the French art de vivre blended with elegant Vietnamese touches and enjoy this wonderful place.



### DAY 1 ARRIVAL IN HANOI

Our guide will pick you up at the airport and bring you to your hotel. Enjoy this bustling Asian metropolis at your own leisure. Overnight at the hotel.

**Please note:** Guides and drivers are not allowed inside the terminal building. We will be waiting for you outside with a Pandaw sign. Hanoi Airport has two exits; if you don't see us, please try the other exit on the same level (30 meters).

### DAY 2 DEPARTURE

Transfer and embark your Pandaw cruise.

### Sofitel Legend Metropole Hanoi

Located in the heart of the old city, the Sofitel Legend Metropole Hanoi is an iconic award-winning luxury Hanoi old quarter hotel. Blending a heritage colonial style with neo-classical luxury and a dash of modernity, you'll find an elegance during your stay you're unlikely to experience anywhere else. Located only 35km away from Hanoi Noibai airport, and mere steps from the Opera House in Hanoi's culturally rich French Quarter, one of Hanoi's prime locations for leisure and business trips.

15 Ngo Quyen Street, Hoan Kiem District, 15 Ngo Quyen, Hoan Kiem 100000, Hanoi  
Tel: +84 24 3826 6919

[Visit hotel website](#)



### Rates include

All transfers as above by coach or car with local guide, 1 night accommodation with breakfast included.

Extension Code: LTM-PANDAW-05

# PRE & POST EXTENSIONS

Pre & Post Bookable via Pandaw.com as add on

---

## Pre Tour

### HANOI

(SILK PATH BOUTIQUE)

#### UPSTREAM

Welcome to this charming boutique hotel situated a stone's throw from Hoan Kiem Lake, the historical center of Hanoi. Silk Path Boutique Hanoi is an oasis of distinguished design and serenity in the bustling heart of the city, putting you on the doorstep of the capital's most inspiring sights, top shopping areas and the street food delights that have put Hanoi on every foodie's bucket list.



#### DAY 1 ARRIVAL IN HANOI

Our guide will pick you up at the airport and bring you to your hotel. Enjoy this bustling Asian metropolis at your own leisure. Overnight at the hotel.

**Please note:** Guides and drivers are not allowed inside the terminal building. We will be waiting for you outside with a Pandaw sign. Hanoi Airport has two exits; if you don't see us, please try the other exit on the same level (30 meters).

#### DAY 2 DEPARTURE

Transfer and embark your Pandaw cruise.

#### Silk Path Boutique Hanoi

Welcome to our charming boutique hotel situated a stone's throw from Hoan Kiem Lake, the historical center of Hanoi. Silk Path Boutique Hanoi is an oasis of distinguished design and serenity in the bustling heart of the city, putting you on the doorstep of the capital's most inspiring sights, top shopping areas and the street food delights that have put Hanoi on every foodie's bucket list.

21 Hang Khay, Hoan Kiem, Hanoi

Tel: +84 24 3938 5555

[Visit hotel website](#)



#### Rates include

All transfers as above by coach or car with local guide, 1 night accommodation with breakfast included.

Extension Code: LTM-PANDAW-06

# PRE & POST EXTENSIONS

Pre & Post Bookable via Pandaw.com as add on

---

## Pre Tour

## HUE & HOI AN

4 NIGHTS

UPSTREAM



---

Hue and Hoi An are two of Vietnam's scenic and historic highlights and a 'must see;' on most people's visit to this most wonderful country. Our included trip on the Perfume River and visit to the enormous Hue Citadel are fascinating. Hoi An is best explored independently and retains a charming village feel which comes alive after sunset with the glow of red lanterns and the senses of Asia. And, of course, enjoy time to relax at your beach resort.

We are pleased to offer a pre and post extension staying in delightful and specially selected boutique hotels, including a connecting domestic flight, all transfers, excursions in Hue, a scenic journey from Hue to Hoi An and 2-nights in Hoi An. It is possible to extend your stay in Hoi An if required.

This is a Pandaw group tour.

### DAY 1 ARRIVAL IN HUE

Individual arrival at Hue airport, meet your local guide and transfer to your hotel for a 2-night stay on a bed and breakfast basis. The rest of the day is free to enjoy the hotel and relax. **Meals:** none

### DAY 2 HUE

This morning we take a boat trip on the serene Perfume River to the best-known pagoda in Middle Vietnam, Thien Mu. Then we visit to the impressive tomb of former Emperor Tu Duc and a beautiful garden once belonging to the royalty followed by a royal style lunch at a local restaurant (included). In the afternoon, visit Hue citadel including Noon Gate, Thai Hoa Palace, Royal Urns and the ruins of the Forbidden Purple City. **Meals:** Breakfast at the Hotel, Lunch at local restaurant.

### DAY 3 HUE - HOI AN

After breakfast we leave Hue for Hoi An. En route we'll travel through the Ocean Clouds Pass, visit Non Nuoc Beach and the fascinating Cham Museum. We continue to your hotel in Hoi An. In the afternoon, you will have time to explore this charming and wonderfully preserved merchant town that retains Chinese, Japanese, Vietnamese and European influences from its flourishing old days. **Meals:** Breakfast at hotel.

### DAY 4 HOI AN

Day at leisure. Explore the beautiful old town of Hoi An or relax at the beach. **Meals:** Breakfast at hotel.

### DAY 5 HOI AN - HANOI

Transfer to Danang Airport for morning flight to Hanoi Airport, followed by transfer to the Angkor Pandaw. It is possible to extend your stay in Hoian - please email [information@pandaw.com](mailto:information@pandaw.com) for availability and prices. **Meals:** Breakfast at hotel.

CONT'D ➔

# PRE & POST EXTENSIONS

Pre & Post Bookable via Pandaw.com as add on

---

## Pilgrimage Village Boutique Resort & Spa

Pilgrimage Village is ideally located in the quiet countryside in rustic village setting surrounding by lush tranquil gardens, yet near to famous historical landmarks. The resort embodies the subtle connection of traditional stylish and modern art concept.

### Facilities

The air-conditioned deluxe rooms have king size double or twin beds, two private balconies, satellite television, safe, telephone, mini bar, writing desk, hair-dryer, alarm clock, in-room coffee, tea set & electronic water pot, slippers, bathtub, bathrobes, daily flowers & fruits, room service, turn-down service and free wifi.

130 Minh Mang road, Hue, Vietnam

Tel: +84 54 3 885 461

[Visit Hotel Website](#)



## Victoria Hoi An Beach Resort & Spa

Victoria Hoi An Beach Resort & Spa replicates a traditional fishing village with small streets, water ponds and village houses with clay tiled roofs. The resort offers comfortable rooms incorporating unique design features inspired by traditional Vietnamese, Japanese and French colonial elements. Combining the elegance of local handicraft with the comfort of an international hotel.

Cua Dai Beach, Hoi An Town, Quang Nam

Tel: 0235 3927 040

[Visit Hotel Website](#)



### Rates include

English speaking guide on tours, 1x lunch at local restaurant, economy one-way domestic air ticket Danang - Hanoi, 2 nights at Pilgrimage Village Hue (Deluxe Room) and 2 nights at Victoria Hoi An (Deluxe Garden Room), transportation by AC vehicle, daily breakfast, and entrance fees.

### Rates exclude

International flights, visa, travel insurance, not mentioned beverages and meal.

Extension Code: LTM-Hue-HoiAnPreVic



# PRE & POST EXTENSIONS

Pre & Post Bookable via Pandaw.com as add on

---

## Post Tour

### SAPA & HANOI

#### UPSTREAM

Welcome to our mountain resort, the Silk Path Grand Sapa, perched on a private spot atop one of Sapa's highest hills. Here time stands still, giving you ample opportunities to stroll through the flower gardens and absorb captivating views of the surrounding mountain range. During colonial times Sapa - surrounded by what is referred to as the "Vietnamese Alps" - was a hill station where the French escaped the Hanoi heat, and this heritage is reflected in our elegant, regal interior design and architecture.



#### DAY 1 TRANSFER TO SAPA

After lunch, transfer from ship to Sapa. Overnight & dinner at Silk Path Grand Sapa.

#### DAY 2 SAPA

After breakfast, transfer to Fansipan Cable Station for an amazing trip to reach the Indochina Roof, 3143m above the sea level. Starting by cable car and step up to the Peak, enjoy the fresh air and the beautiful landscapes from what so call "the roof of Indochina".

#### DAY 3 SAPA

Stroll through the flower gardens and absorb captivating views of the surrounding mountain range at Silk Path Grand Sapa. Sapa is located in Lao Cai Province, 380 km Northwest of Hanoi, in close proximity to the Chinese border. Famous for its terraced rice paddies & highlands, Sapa is home to more than 30 colorful hill tribes and close to Vietnam's highest peak, Mount Fansipan. From Sapa, heading northwards on national road 4C to O Quy Ho with several stops for magnificent landscapes of Fansipan, Sin Chai valley and especially amazing flower and vegetable farms. Then turn right to Ban Khoang, a village of the Red Zao ethnic peoples who live their unique way of life and well maintain their traditional values. The village looks prosperous thanks to the combination of wet rice cultivation on the terraced fields with cardamom farming under the shade of trees in thick forest. Take a walk to explore this remote village for a brief understanding of local life. Then leaving Ban Khoang for Ta Giang Phing valley inhabited by the Black Hmong who live in some small villages scattering along a peaceful stream, explore the local life and then back to hotel in Sapa for Lunch at local restaurant.

Locating just at the south eastern side of HAM RONG MOUNTAIN and just close to Sapa town but this valley seems to be unknown by most of the tour operators as well as visitors. Inhabited by the Hmong peoples this narrow valley is quiet and non touristic which is quite different from TA PHIN or MUONG HOA VALLEYS where the local peoples have changed much because of the strong influence of tourism. Trip begins from Sapa at 08.30 in the morning firstly by road transfer for 12km southwards and uphill the DEN THANG MOUNTAIN. Enjoy several stops for marvelous landscapes of Hoang Lien mountain range and Muong Hoa valley before arriving to a small hamlet of village which sits at 1,572m high and overlooking down the Muong Hoa valley. Leaving the vehicle for an easy walk to explore this charming hamlet of the Black Hmong with lots traces of the past sifting lifestyle of the Hmong. Then follow the large village path gradually downhill along the stunning valley of Sa Seng, passing several hamlets of the SA SENG and SAU CHUA VILLAGES along the way which are organized in typical way of the Hmong dwelling, Wooden roofed houses surrounded by rock-all where pot-belly pigs, chickens, water

CONT'D ➡

# PRE & POST EXTENSIONS

Pre & Post Bookable via Pandaw.com as add on

---

buffaloes running here and there and children entertaining themselves with their own games and toys. There are chances to see Hmong women making fiber from hemp, spinning, weaving to make traditional costumes. Walk end after paying visiting to Sa Pa, another hamlet of the Hmong which located near the former place of Sapa traditional market.

Overnight at Silk Path Grand Sapa. Lunch at local restaurant.

## DAY 4 HANOI

After breakfast, leave Sapa for Hanoi. Upon arrival, explore Hanoi with a Street food tour and then visit an art gallery, meet an artist for discussion of the development of fine arts in Vietnam.

Breakfast at hotel, street food for lunch.

## DAY 5 Hanoi

Breakfast at your hotel, transfer to the airport.

### Silk Path Boutique Hanoi

Welcome to our charming boutique hotel situated a stone's throw from Hoan Kiem Lake, the historical center of Hanoi. Silk Path Boutique Hanoi is an oasis of distinguished design and serenity in the bustling heart of the city, putting you on the doorstep of the capital's most inspiring sights, top shopping areas and the street food delights that have put Hanoi on every foodie's bucket list.

21 Hang Khay, Hoan Kiem, Hanoi

Tel: +84 24 3938 5555

[Visit hotel website](#)



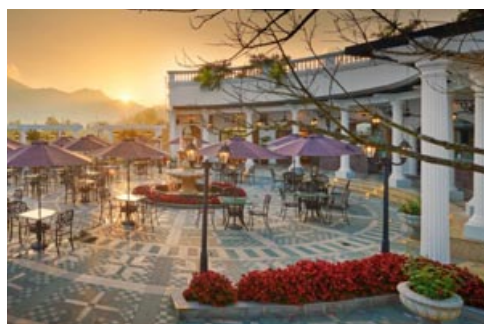
### Silk Path Grand Sapa

Welcome to our mountain resort, perched on a private spot atop one of Sapa's highest hills. Here time stands still, giving you ample opportunities to stroll through the flower gardens and absorb captivating views of the surrounding mountain range. During colonial times Sapa – surrounded by what is referred to as the "Vietnamese Alps" - was a hill station where the French escaped the Hanoi heat, and this heritage is reflected in our elegant, regal interior design and architecture.

Doi Quan 6, Group 5, Sapa, Lao Cai, Vietnam

Tel: +84 214 3788 555

[Visit hotel website](#)



### Rates include

Transfers and tours as per itinerary, accommodation at the Silk Path Boutique Hanoi and the Silk Path Grand Sapa, with daily breakfast and three lunches and one dinner during the tour.

Extension Code: LTM-PANDAW-11

# PRE & POST EXTENSIONS

Pre & Post Bookable via Pandaw.com as add on

---

## Post Tour

## HUE & HOI AN

### 4 NIGHTS

#### UPSTREAM



Hue and Hoi An are two of Vietnam's scenic and historic highlights and a 'must see;' on most people's visit to this most wonderful country. Our included trip on the Perfume River and visit to the enormous Hue Citadel are fascinating. Hoi An is best explored independently and retains a charming village feel which comes alive after sunset with the glow of red lanterns and the senses of Asia. And, of course, enjoy time to relax at your beach resort.

We are pleased to offer a pre and post extension staying in delightful and specially selected boutique hotels, including a connecting domestic flight, all transfers, excursions in Hue, a scenic journey from Hue to Hoi An and 2-nights in Hoi An. It is possible to extend your stay in Hoi An if required.

This is a Pandaw group tour.

#### DAY 1 HANOI - HUE

Disembark and fly from Hanoi to Hue. On arrival at Hue airport, meet your local guide and transfer to on a bed and breakfast basis. The rest of the day is free to enjoy the hotel and relax. **Meals:** none

#### DAY 2 HUE

This morning we take a boat trip on the serene Perfume River to the best-known pagoda in Middle Vietnam, Thien Mu. Then we visit to the impressive tomb of former Emperor Tu Duc and a beautiful garden once belonging to the royalty followed by a royal style lunch at a local restaurant (included). In the afternoon, visit Hue citadel including Noon Gate, Thai Hoa Palace, Royal Urns and the ruins of the Forbidden Purple City. **Meals:** Breakfast at the Hotel, Lunch at local restaurant.

#### DAY 3 HUE - HOI AN

After breakfast we leave Hue for Hoi An. En route we'll travel through the Ocean Clouds Pass, visit Non Nuoc Beach and the fascinating Cham Museum. We continue to your hotel in Hoi An. In the afternoon, you will have time to explore this charming and wonderfully preserved merchant town that retains Chinese, Japanese, Vietnamese and European influences from its flourishing old days. **Meals:** Breakfast at hotel.

#### DAY 4 HOI AN

Day at leisure. Explore the beautiful old town of Hoi An or relax at the beach. **Meals:** Breakfast at hotel.

#### DAY 5 HOI AN - DANANG

Transfer to Danang Airport for your onward flight. It is possible to extend your stay in Hoian – please email [information@pandaw.com](mailto:information@pandaw.com) for availability and prices. **Meals:** Breakfast at hotel.

CONT'D ➡

# PRE & POST EXTENSIONS

Pre & Post Bookable via Pandaw.com as add on

---

## Pilgrimage Village Boutique Resort & Spa

Pilgrimage Village is ideally located in the quiet countryside in rustic village setting surrounding by lush tranquil gardens, yet near to famous historical landmarks. The resort embodies the subtle connection of traditional stylish and modern art concept.

### Facilities

The air-conditioned deluxe rooms have king size double or twin beds, two private balconies, satellite television, safe, telephone, mini bar, writing desk, hair-dryer, alarm clock, in-room coffee, tea set & electronic water pot, slippers, bathtub, bathrobes, daily flowers & fruits, room service, turn-down service and free wifi.

130 Minh Mang road, Hue, Vietnam

Tel: +84 54 3 885 461

[Visit hotel website](#)



## Victoria Hoi An Beach Resort & Spa

Victoria Hoi An Beach Resort & Spa replicates a traditional fishing village with small streets, water ponds and village houses with clay tiled roofs. The resort offers comfortable rooms incorporating unique design features inspired by traditional Vietnamese, Japanese and French colonial elements. Combining the elegance of local handicraft with the comfort of an international hotel.

Cua Dai Beach, Hoi An Town, Quang Nam

Tel: 0235 3927 040

[Visit hotel website](#)



### Rates include

English speaking guide on tours, 1x lunch at local restaurant, economy one-way domestic air ticket Hanoi to Hue, 2 nights at Pilgrimage Village Hue (Deluxe Room) and 2 nights at Victoria Hoi An (Deluxe Garden Room), transportation by AC vehicle, daily breakfast, and entrance fees.

### Rates exclude

International flights, visa, travel insurance, not mentioned beverages and meal.

Extension Code: LTM-Hue-HoiAnPostVic



# OPTIONAL PACKAGE ADDONS & OTHER INFORMATION

---

## Optional cruise add ons

**PRE-BOOKABLE HOUSE WINE PACKAGE** [Read more](#)

**FREE FLOW DRINKS** [Read more](#)

**FREE FLOW DRINKS & WINE PACKAGE** [Read more](#)

---

## River Conditions Warning!

The rivers you will sail on are subject to seasonal rises and falls of water level, in some places as much as 30 metres. Water levels can change dramatically overnight and a sudden rise can impede our progress upstream considerably and even prevent us from passing under certain bridges. A sudden fall can result in our being unable to get into certain places or go as far upstream as we would hope. Groundings on sandbars are not infrequent and are part of the excitement of any Pandaw expedition. Published itineraries are indicational only and subject to sudden change. In such events alternative itineraries will be provided and we do our best to ensure that if a stop is missed we make up for it with another stop. Passengers are thus forewarned and expected to be flexible and patient. River cruising in Asia can be a dramatic and adventurous experience - not like cruising the controlled waterways of Europe or America. Note also that we operate in areas with little or no developed infrastructure and subject to the strictures of local officialdom. Be prepared for this and it is all more the fun!

---

## Useful Links

**BOOKING TERMS & CONDITIONS** [Read more](#)

**GENERAL INFORMATION & LIFE ON BOARD** [Read more](#)

**VISA INFORMATION** [Read more](#)

## FOLLOW US ON SOCIAL MEDIA



facebook.com/pandawriverexpeditions



@pandaw\_river\_expeditions



@pandaw-river-expeditions



Pandaw Expeditions



# PANDAW

### UK

 FREEPHONE 0800 038 1029

 [uk@pandaw.com](mailto:uk@pandaw.com)

### GLOBAL

 +84 (0)28 4458 2618

 [information@pandaw.com](mailto:information@pandaw.com)

### NORTH AMERICA

 TOLL FREE 1-877-872-6329

 [usa@pandaw.com](mailto:usa@pandaw.com)

### AUSTRALIA

 TOLL FREE 1800 207 625

 [aus@pandaw.com](mailto:aus@pandaw.com)

### NEW ZEALAND

 TOLL FREE 0800 115 250

 [aus@pandaw.com](mailto:aus@pandaw.com)

P A N D A W . C O M